

Ecosystem Protection

- 1. Ecosystem Restoration Program Element (ERP)**
- 2. Environmental Water Account Program Element (EWA)**
- 3. Programmatic Regulatory Commitments for listed species and exports**
- 4. New Biological Opinions and new EWA for proposed operations**
- 5. Continued investment in Science**



**Restoring Ecological Health of Bay-Delta watershed
CALFED ROD describes ERP funding \$150
million/year**

Environmental Water Account EWA

**Water available to CDFG, USFWS, NMFS
for pumping curtailments and other actions**

Programmatic Regulatory Commitments

Three Tiers of Assets:

Tier 1 - Baseline level of protection – current BOs

Tier 2 - EWA, plus ERP annually funded

Tier 3 - Commitment for additional water, if needed, to avoid jeopardy

Programmatic Regulatory Commitments

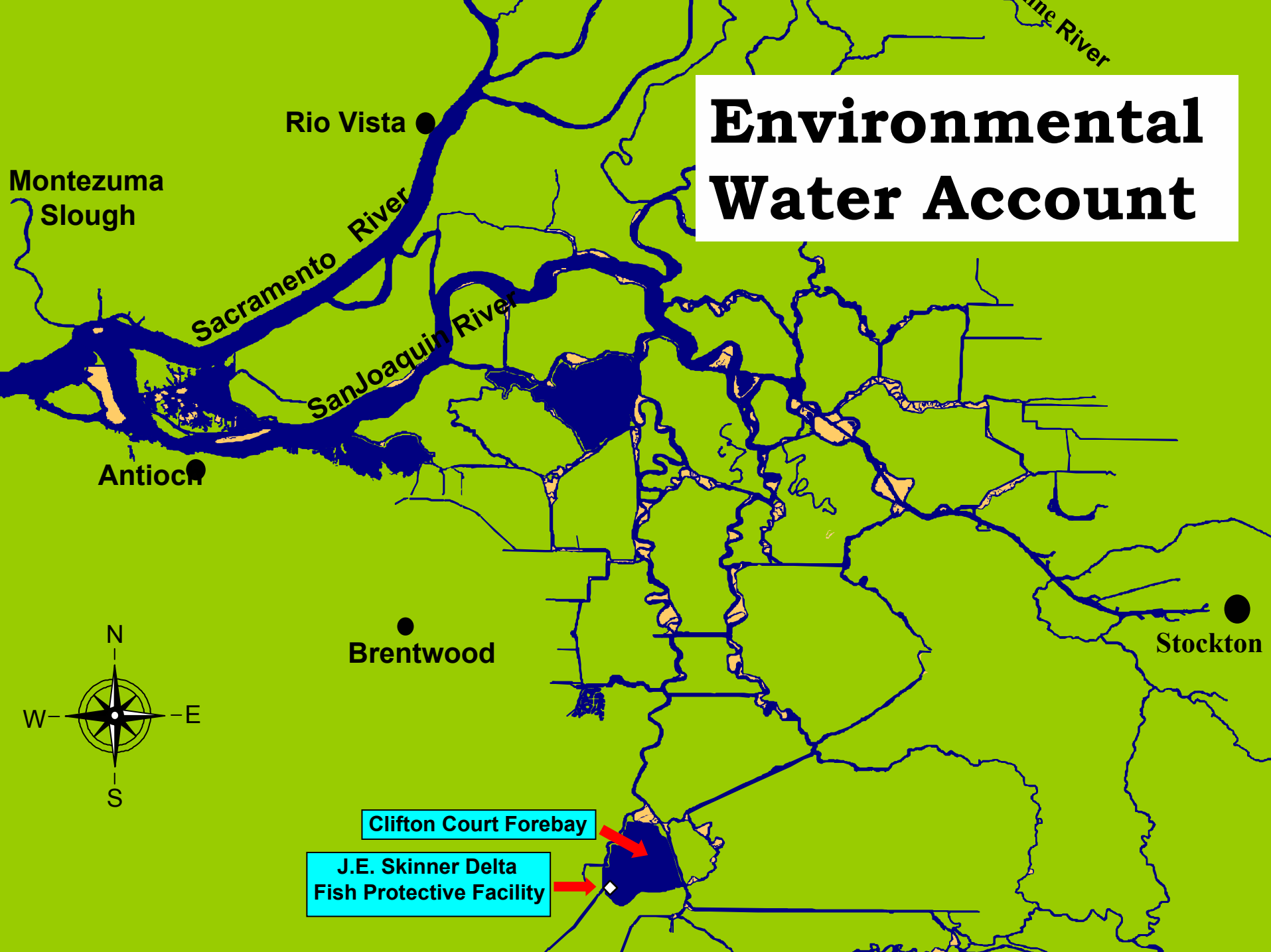
Tier 1 - Baseline level of protection – current BOs

Tier 2 - EWA, plus ERP annually funded

Tier 3 - Commitment for additional water, **if**
needed,
to avoid jeopardy

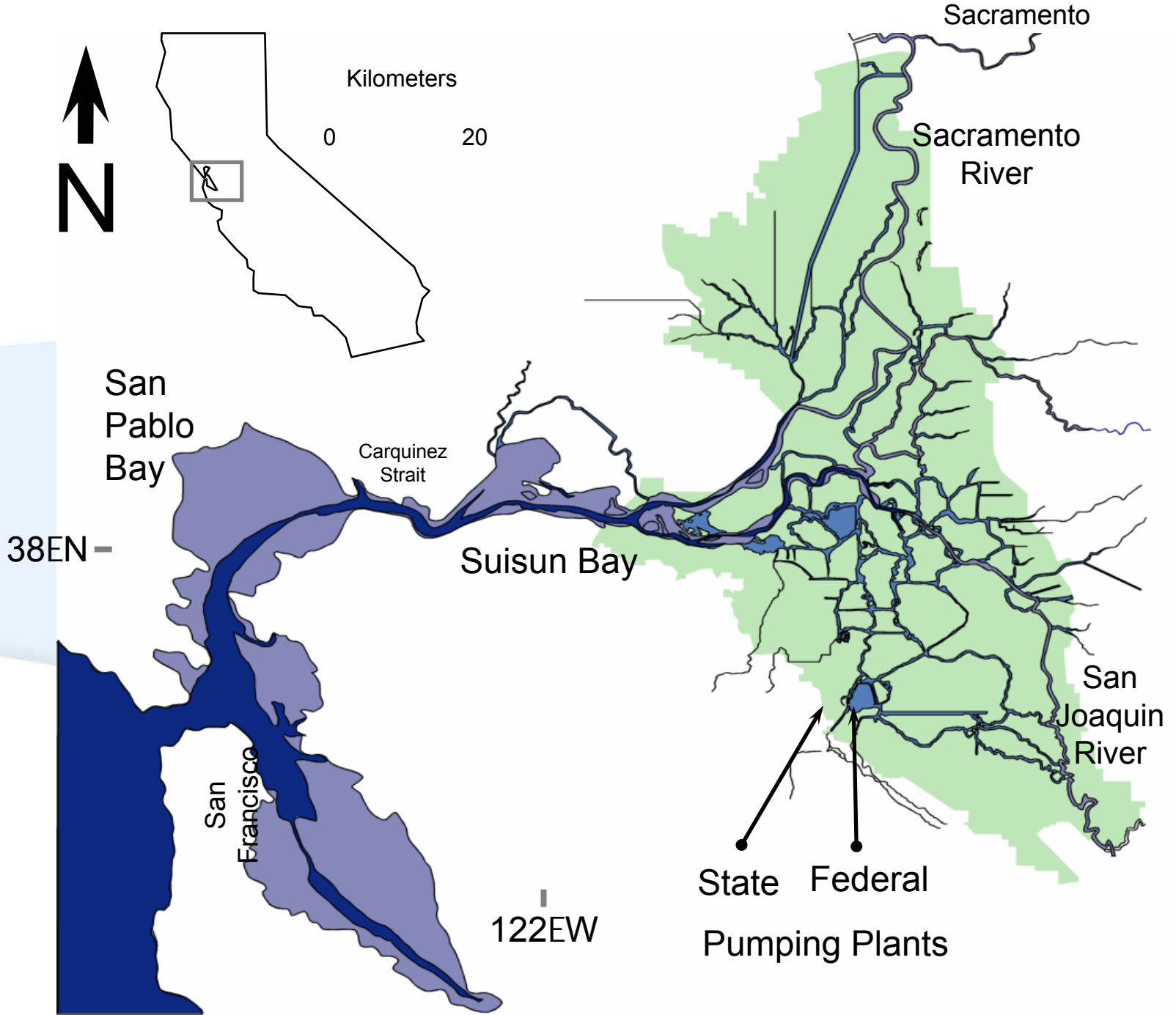
New EWA and New BOs for proposed operations, and evaluation of ***ERP progress*** used in reinitiation of Programmatic consultation

Environmental Water Account

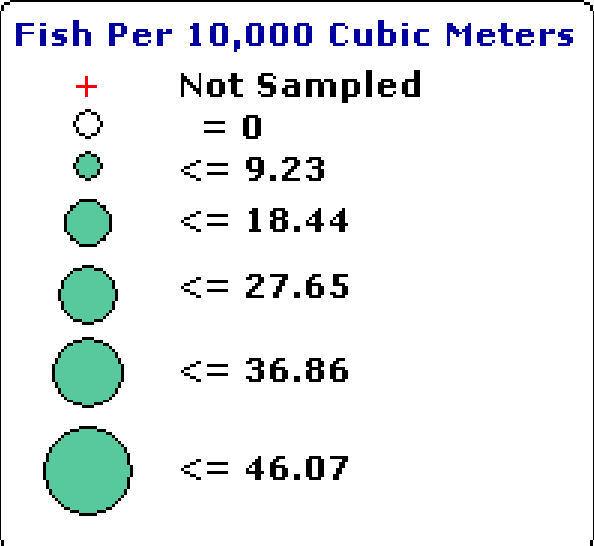
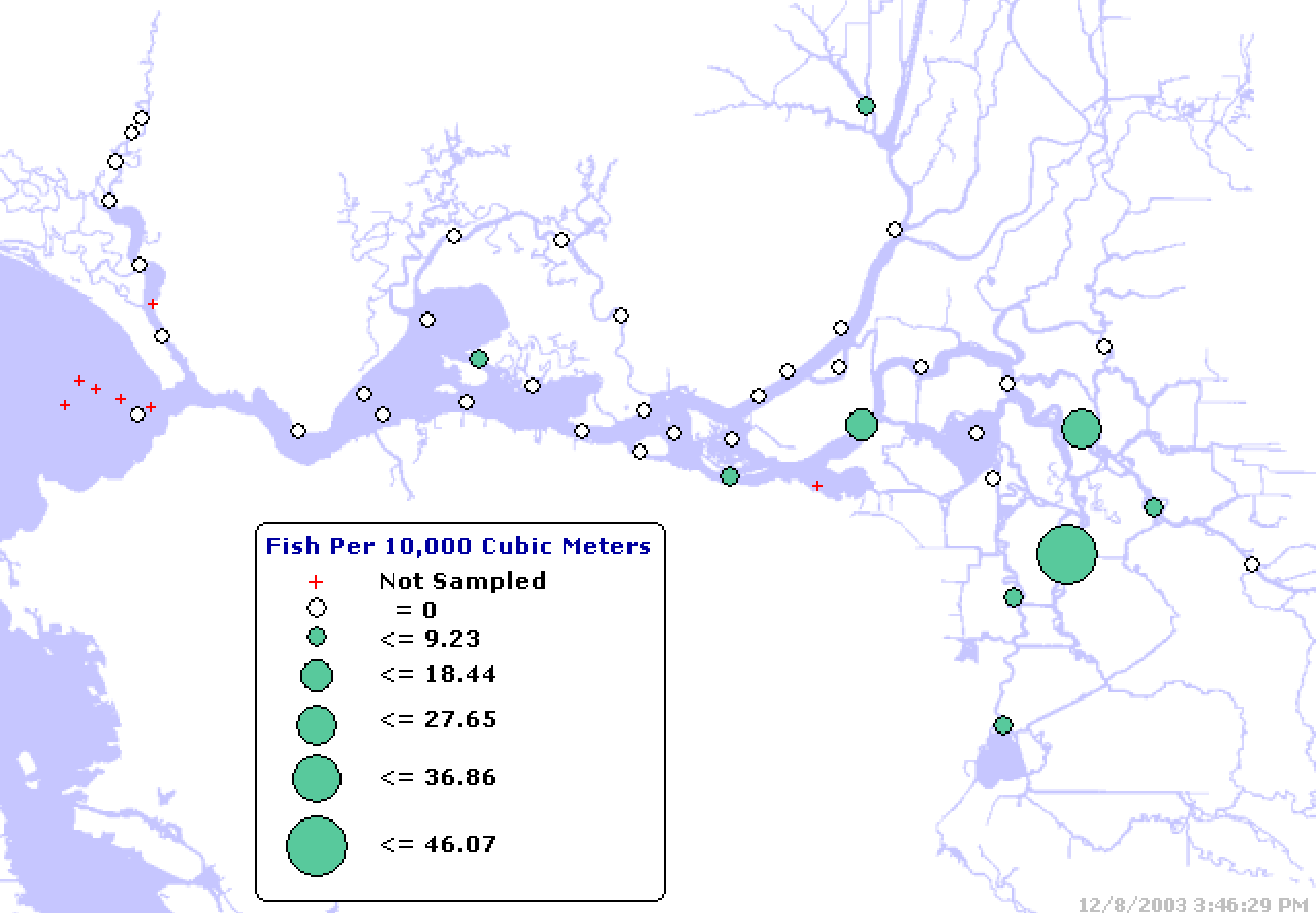


EWA example: Delta smelt





Delta Smelt 2003
SURVEY 3 (4/21/2003 - 4/26/2003)



Delta Smelt 2003
SURVEY 8 (6/30/2003 - 7/3/2003)

